

INFINIA INFORMATION MANAGEMENT



PRODUCT APPLICATION MANUAL

NL190501

Fancom[®]
forward thinking

Introduction

Infinia is the umbrella name for all products that collect, present or modify data generated by Fancom controllers.

The Infinia system consists of the following products:

1. FarmManager for safe and secure access to data from the process computers ('Infinia Connect')
2. Arteria for safe and secure access to data from the process computers ('Infinia Connect')
3. Infinia Remote App for tablet and smartphone for remote operation
4. Infinia Sensor App for tablet and smartphone provides a clear overview of your sensor data
5. Infinia Data Export for access to data, intended for third parties
6. FarmManager 4 products

1. FarmManager - Infinia Connect

FARM MANAGER – 'Infinia Connect'



From FarmManager 11.17 onwards, software has been implemented to create a so-called 'secured gateway'. We call this software 'Infinia Connect'. This software is essential to enable safe and secure access to process data from the Fancom controllers and use this data in other applications such as the Remote App and the Fancom dashboards.

2. Arteria - Infinia Connect

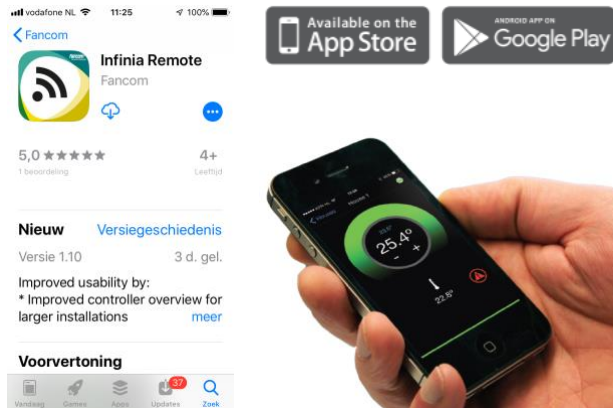
ARTERIA – 'Infinia Connect'



From Arteria C2.0 onwards, software has been implemented to create a so-called 'secured gateway'. We call this software 'Infinia Connect'. This software enables safe and secure access to process data from the Fancom controllers and use of this data in other applications such as the Infinia Remote App.

3. Infinia Remote App

You can only download the Infinia Remote App for free from the Apple app store or the Google play store if you have installed one of the above solutions.



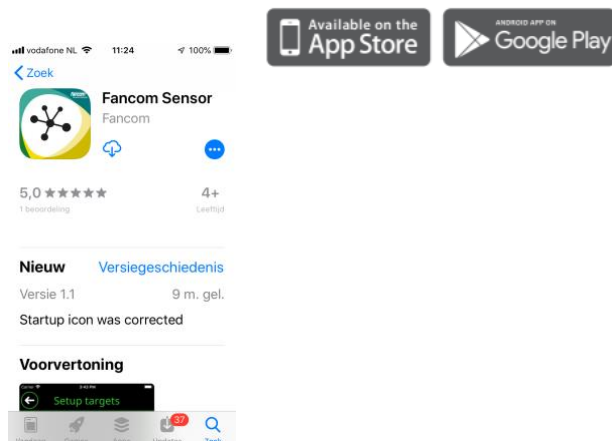
4. Infinia Sensor App



An Infinia Router is necessary for safe and secure access to Fancom IOT sensors such as eYeGrow and eYeNamic. The software in this router works in the same way as the software that has been implemented in the Arteria and FarmManager.



If you do not want to read out the IOT sensors from a remote location, the simpler solution above is also sufficient. You can only download the Infinia Sensor App for free from the Apple app store or the Google play store if you have installed one of the above solutions.



5. FarmManager 'Infinia Connect' – Data Export

From FarmManager 12.0 onwards, you can access data from the process computers that is intended for third parties. For example, management software.

FARM MANAGER + INFINIA CONNECT



If the third party has its own cloud environment, the above solution can be chosen.

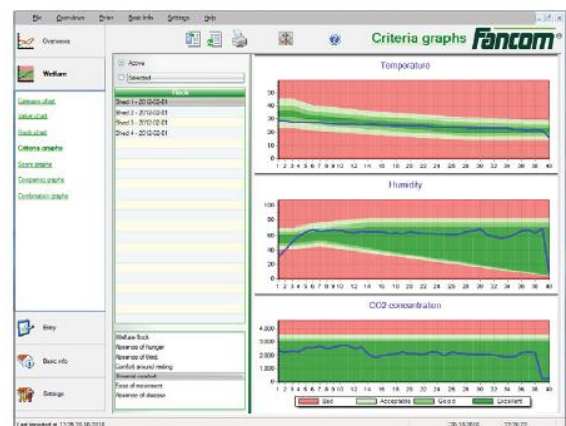
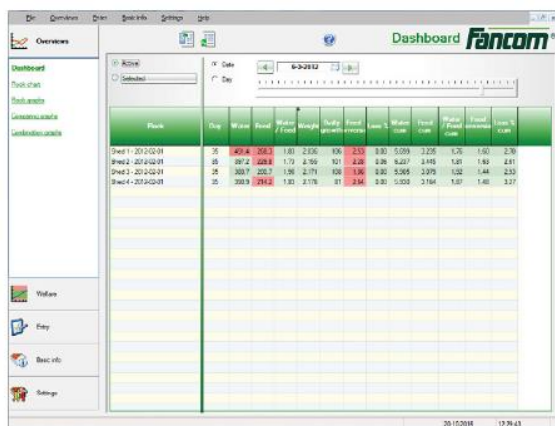
FARM MANAGER + INFINIA CONNECT



It is also possible to access data via an external location using the above solution.

6. FarmManager For - Management Software

"FarmManager For" is a special FarmManager add-on that clearly displays and registers the most important performance indicators in a house, such as feed and water intake and growth data. The extensive analysis helps you ensure healthy growth and permanently improve the effectiveness of your production cycles. No special FarmManager version is required for the use of "FarmManager For".



Versions

- FarmManager For Broilers
- FarmManager For Layers
- FarmManager for Finishers

Status Infinia – Lumina

Version 010519

		Lumina screen on controller	Lumina screen on FarmManager	FarmManager - Infinia Connect	Arteria - Infinia Connect	Remote App IOS	Remote App Android	FarmManager - Data Export
Poultry	L35	✓	✓	✓		✓	✓	
	L36	✓	✓	✓		✓	✓	
	L37	✓	✓	✓		✓	✓	
	L38	✓	✓	✓		✓	✓	
	L38H	✓	✓	✓		✓	✓	
	L40	✓	✓	✓		✓	✓	
	L41	✓	✓	✓		✓	✓	
	L41.2							
	L42	✓	✓	✓		✓	✓	
	L42.2*							
	L44*							
	L44.2*							
	L47	✓	✓	✓		✓	✓	
	Aura37	✓	✓					
Pigs	L16*							
	L17							
	L20	✓	✓					
	L21	✓	✓					
	L71*							
	L78*							
	Aura12	✓	✓					
	Aura14	✓	✓					
Mushrooms	L750	✓						
	L751	✓						
	L765.e	✓						
	L765.xl	✓						
	L767	✓						

✓	Ready
	Not ready yet, but will be implemented
	Will not be implemented
*	No remote app 'Lumina' available, but 'Classic' can be remotely accessed by WebLinkBox